

ADVANCED COURSE on PERMACULTURE DESIGN



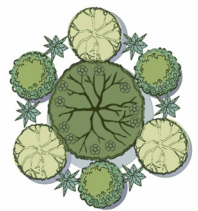
ARANYA AGRICULTURAL ALTERNATIVES

25th - 31st October 2019

Aranya Permaculture Academy, India

GUILDA
PERMACULTURE

www.guildapermaculture.com

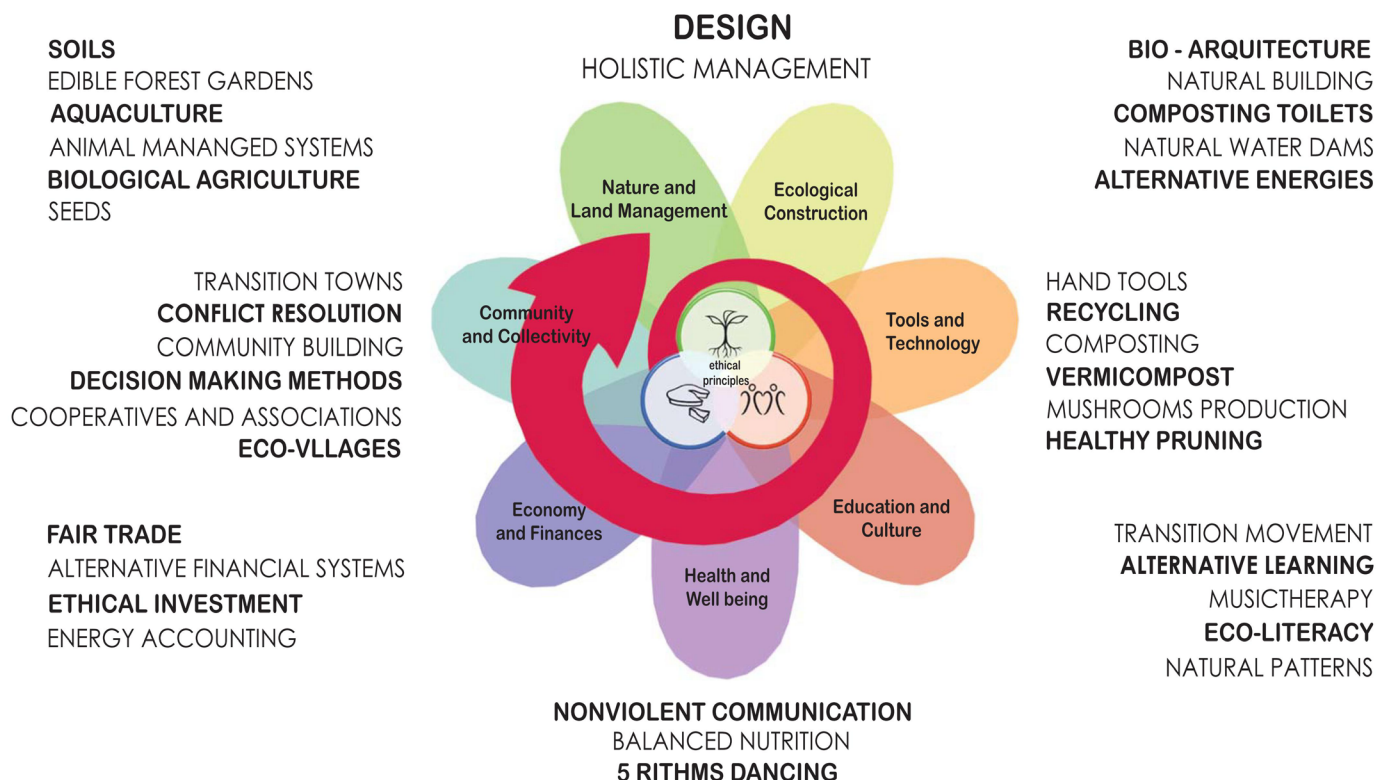


WHAT IS PERMACULTURE?

Permaculture is a design methodology that uses ecosystems as models to create sustainable and regenerative human systems. Healthy ecosystems are taken as a model because they are the best example of energy efficiency and dynamic resiliency that we can observe. Permaculture is also considered a philosophy of life and a global grassroots movement, being recognized as one of the most powerful ways of creating positive change in the world.

Permaculture's holistic approach can be applied to land, social and economic systems. Its methodology integrates several fields of action and various subjects, putting at our disposal techniques and strategies from multiple sustainable and regenerative disciplines.

Permaculture it is not prescriptive! Instead, it offers a new set of eyes with which to view the Web of Life and our role in it. Through understanding Nature and its processes, we can utilize the permaculture ethics and principles to design contextual solutions for the huge environmental, social and economic challenges we are facing in the world.



**ARANYA AGRICULTURAL
ALTERNATIVES**
www.permacultureindia.org



**GUILDA
PERMACULTURE**
www.guildapermaculture.com

WHO IS THIS COURSE FOR?

FOR ANYONE WITH A PDC

Anyone who has completed a Permaculture Design Course (PDC) that wants to create effective solutions to their own specific situation (land, community and/or business) and/or is a professional wanting to apply permaculture design to their field of work.

FOR PERMACULTURISTS

Are you looking to Design your Unique Permaculture System for success? Landscape and/or Peoplescape? Or are you wanting to apply permaculture design to a specific project (farm, business, restoration project, etc.)?

This Advanced Design Course is Permaculture designers wanting to create sustainable homes and resilient lifestyles – guiding designers through all the steps of the Permaculture Design process to ensure they create regenerative systems that fit their aspirations, needs and dreams.

- DISCOVER what's really most important to you
- DESIGN a plan to achieve those things
- RETHINK problems as solutions to transform obstacles into assets
- TAKE ACTION towards implementation of design plan
- IDENTIFY & RECORD weaknesses for future design process
- MITIGATE effects of climate change

FOR DESIGN PROFESSIONALS

This is an advanced level coursework for professionals interested in eco-literacy and permaculture design, both online and in person. If you are a professional wanting to respond effectively to climate and resource challenges this is a course for you whether you are an architect, landscape architect, ecologist, engineer, planner, permaculturalist or other design professional. This advanced curriculum includes research materials offering real-world case studies at the core of learning.

This is the course for you, if you are wanting to:

- Design successful regenerative systems?
- Pursue a professional career in permaculture?
- Become a leader in sustainability within your profession (architect, landscape architect, ecologist, engineer, planner, etc.)?
- Learn directly from proven professional designs and real-world case studies?
- Connect with experienced practitioners and trainers?



**ARANYA AGRICULTURAL
ALTERNATIVES**
www.permacultureindia.org



**GUILDA
PERMACULTURE**
www.guildapermaculture.com

UNIQUE COURSE

This APDC is a unique opportunity!

Our students receive the step-by-step guidance they need to design custom permaculture systems that really work. We have dedicated years to the deepening of our knowledge of permaculture design and are now sharing it in our Advanced Permaculture Design Courses (APDC). And we utilized the Permaculture Design process to create it all!

Our **extensive professional and personal learning journeys** provide students with clear guidance and a depth of knowledge in real-world design, implementation and maintenance. The curriculum has been re-imagined to showcase **case studies of mature permaculture sites** that have been thriving for decades at the core of learning, which allows students access to a robust network of pioneering practitioners. In addition, we have optimized the effectiveness of **permaculture design by fully integrating Holistic Management (HM)**, a whole systems decision-making framework.

REAL-WORLD PROFESSIONAL PROJECTS:

Our team at GUILDA has been part of the permaculture movement for over 2 decades with more than 70 projects of different scales and contexts implemented and successfully running. Our students get direct access to this wealth of information about professional permaculture design. Our on-the-ground expertise paired with dynamic communication skills gained while teaching dozens of courses and workshops worldwide, gives our students a unique edge in developing the ability to design their own successful permaculture systems and enterprises.



PERMACULTURE PLUS HOLISTIC MANAGEMENT:

The GUILDA design process is guided by the regenerative principles of both Permaculture and Holistic Management (HM). These approaches seek to integrate robust environmental designs with beneficial social and economic outcomes. This is called the “triple bottom line.” In Permaculture it is defined as: Earth Care, People Care, and Fair Share, while in HM it is defined as: Future Resource Base (environment or Earth Care), Quality of Life (social or People Care), and Forms of Production (economic or Fair Share). This is the key to what makes these practices so potent when combined. The language may be different but the concepts and driving foundations are the same. This twofold approach incorporates and interconnects the roles and functions of people and their production, trading, education, and leisure activities with the enduring use of land, natural resources and buildings. The physical development of the land and its long-term use mimics natural systems. It seeks to minimize environmental impact and requires the re-use or recycling of wastes and resources. This APDC not only explains the triple bottom-line ethic, but brings to light how to effectively apply its true power as actual environmental regeneration, social justice, and equitable economy.



**ARANYA AGRICULTURAL
ALTERNATIVES**
www.permacultureindia.org



**GUILDA
PERMACULTURE**
www.guildapermaculture.com

UNIQUE COURSE

NETWORK OF PERMACULTURE PIONEERS:

We lived and worked side by side with world renowned permaculture designers such as **David Holmgren & Su Dennett, Graham & Annemarie Brookman, Rosemary Morrow, Max Lindegger, Robyn Francis, Geoff Lawton, Kat Lavers, Brock Dolman, Kendall Dunningan, The Bullock Brothers, Wayne Weiseman** and others.



Graham & Annemarie
Brookman
THE FOOD FOREST



David Holmgren &
Su Dennett
MELLIODORA



Kat
Lavers
THE PLUMMERY



Rosemary
Morrow
ROWE'S HOME



Trudi & Max
Lindegger
CRYSTAL WATERS



CASE STUDIES OF PERMACULTURE PIONEERS:

These case studies are the product of the instructors' direct action research tour that has accumulated data over several years to capture accurately the evolution of each project. We have travelled the world to gain the unique experience of firsthand knowledge of mature permaculture systems and understand what makes them successful. We looked at how the systems were designed (the full ongoing design cycle) and how permaculture principles and ethics were applied in their everyday lives. We also identified the main challenges and achievements in detail for each project. This thorough analysis helped to flush out the key aspects that were shared among the projects. This gives us a powerful insight into what makes a Permaculture Design successful. We then synthesized this data into user-friendly and cross-referenced formats to optimize the spread of accurate information with a quickly broadening audience. This powerful resource gives students a unique and detailed understanding of applied permaculture design thinking amid real-world challenges and timeframes as well as the essential theory, eco-literacy and design process.



ARANYA AGRICULTURAL
ALTERNATIVES
www.permacultureindia.org



GUILDA
PERMACULTURE
www.guildapermaculture.com

COURSE OVERVIEW

What's included?

Interactive delivery of in-depth Permaculture Design curriculum that is custom made by experienced designers. Our team will take you through all the phases of a professional design process using real-world experience and case studies. This process follows the permaculture concept of "Patterns to Details", so we work from: Ethics -> Principles -> Strategies -> Techniques

How long does the program last?

Full Program takes place over one week (7days).

Materials

During the course, we will deliver various materials according to the topic. Examples of these materials are:

Permaculture Research Tour Case Studies (Mature & Successful Design Systems)
Guide Book on "Step-by-step" Permaculture Design
Examples of implemented professional Permaculture Designs
Maps/photographs/collage.

OUR FACILITATION STYLE



Our aim as trainers is to creatively facilitate a learning process that empowers people in Permaculture design thinking. We intend to break the barrier between "student" and "teacher" used in conventional education systems, opening our eyes to the mutual learning opportunities that arise during courses.

Our role as "facilitators" is one that guides the learning process using the framework of the curriculum, while empowering participants in acquiring knowledge through understanding of the subject matter.

We incorporate diverse teaching methods (lecture with visuals, slideshows, readings, interactive games, presentations, films, independent journaling, group hands-on projects, etc.) to satisfy all learning styles and create a dynamic community experience. Through this diversity, participants are engaged in learning which enriches this transformative and fun experience.



**ARANYA AGRICULTURAL
ALTERNATIVES**
www.permacultureindia.org



**GUILDA
PERMACULTURE**
www.guildapermaculture.com

PROGRAM CONTENT

All 10 sessions described below will happen in the course of 7 days:

Initial questionnaire

- Let's find out where you are at in your Permaculture journey through a questionnaire:
- Are you familiar with the Permaculture Principles and Ethics? Are you confident in applying them to your life? How do you do it?
- Do you have a piece of land? What is the size?
- Are you familiar with the Permaculture Design Process? Have you applied it in your own life and/or land?
- Who are all the decision-makers for this project? If they have defined roles, what are they? What is their connection to Permaculture?
- Are you familiar with systems thinking and whole systems design? If so, please explain your understanding.
- What kind of functions are you looking to take place on the land (business, public outreach, co-housing, livestock, market garden, etc)?

Session 1. Introduction

TOPIC 1: Shifting paradigms (Changing the way we make decisions)

TOPIC 2: Key drivers of ecosystems (Ecological cycles & principles)

TOPIC 3: Design process basics

TOPIC 4: Key design tools

TOPIC 5: What is a vision statement and how to develop an effective one?

Session 2: Vision & Goals

TOPIC 1: Refining & evaluating your vision

TOPIC 2: Brainstorming

- General ideas & possibilities (potential of the project)
- What problems to solve?
- What intentions to fulfil?

TOPIC 3: Stating a clear Mission for the team

TOPIC 4: Introducing Holistic Management as a tool for goal setting

Session 3: Setting realistic goals

TOPIC 1: Define Forms of Production and Future Resource Base

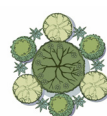
TOPIC 2: Using the Ethical Lens: How to evaluate and finalize your decisions? (testing your vision, mission & goals)

TOPIC 3: Effective Collaboration (ex: Nonviolent Communication, Efficient Meetings, Solution Oriented Thinking, Financial Transparency)

TOPIC 4: Base Map (defining appropriate tools)



**ARANYA AGRICULTURAL
ALTERNATIVES**
www.permacultureindia.org



**GUILDA
PERMACULTURE**
www.guildapermaculture.com

PROGRAM CONTENT

Session 4: Assessment & Analysis

TOPIC 1: Observation (photographic archiving, note-taking, sketches, etc.)

TOPIC 2: Scale of Permanence (Patterns to Details)

TOPIC 3: Flow Analysis (Sectors, Water & Circulation)

TOPIC 4: Baseline Testing (Water Quality, Biological Soil, Chemical Soil, Soil Structure, etc.)

Session 5: Conceptual Plan

TOPIC 1: Whole Systems Design (Land, Social, Economic)

TOPIC 2: Functional Elements (Water Systems, Growing Systems, Built Systems)

TOPIC 3: Zoning

TOPIC 4: Using the Principles: Where to place elements?

Session 6: Refining Conceptual Plan & Implementation Strategy

TOPIC 1: Efficiency Review (Have you applied the ethics and principles in the best way possible?)

TOPIC 5: Building Social & Financial Capital

TOPIC 2: Implementation Outline (What actions and in what order will be most effective in reaching your vision? What are the most appropriate strategies and techniques for your contextual situation?)

TOPIC 3: Seasonal Timing (When to start, according to your climate and resources?)

TOPIC 4: Ethical Review (Does your strategy align with your vision, goals, ethics and principles?)

PLEASE NOTE: The remaining sessions (7-10) are custom crafted to each specific student group and their unique needs. The detailed topics for each session will evolve from the outcomes of the first 6 sessions. The main concepts covered in the remaining sessions are as follows:

Session 7: Master Planning, Phases of Implementation & Maintenance

Session 8: Monitoring & Evaluation

Session 9: Strategic Designing of Details

Session 10: Final Design



**ARANYA AGRICULTURAL
ALTERNATIVES**
www.permacultureindia.org



**GUILDA
PERMACULTURE**
www.guildapermaculture.com

ABOUT ARANYA

ARANYA AGRICULTURAL ALTERNATIVES (Permaculture India) is an environmental and developmental organization registered (No.1502 of 1999) under the AP (Telangana Area) Public Societies Registration Act 1350 Fasli (Act 1 of 1350 F). It is facilitating and providing services to the communities, organizations, government and other national and international agencies since 1999.

“ARANYA” aims to provide alternative solutions to the present conventional and chemical agricultural practices. Since forest is the mother of agriculture, ARANYA is committed to follow the philosophy of natural agricultural practices with focus on forest farming so as to take up production without causing destruction to planet earth, enabling all life forms to coexist. ARANYA strongly believes that there is only one law i.e., Nature’s Law and human beings should not extract anything beyond their needs from the nature and also should return whatever that remains unused back to nature, a law which can be stated as LAW OF RETURNS to increase the ability of sustainable production.

ARANYA’s philosophy is based on the three ethics of Permaculture – Earth Care, People Care and Fair Share. We believe in working with nature, to empower communities to overcome existing social and environmental challenges.

ABOUT GUILDA

Sara and Eunice created GUILDA, a permaculture design enterprise that supports permaculture designers around the world.

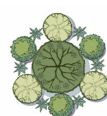
GUILDA’s actions:

- **design** elegant, effective and regenerative systems
- **teach** eco-literacy and “Permaculture thinking” through Advanced Permaculture Design for professionals
- **publish & share** valuable research resources on Permaculture systems from all over the world
- **consult, guide & empower** people to design regenerative systems for their specific context
- **connect** practitioners and Permaculture projects worldwide to create active support networks

We have been part of the Permaculture Movement for 2 decades: teaching, designing and consulting. From our Permaculture journeys, we have created detailed research of successful and mature Permaculture systems worldwide. Living and working side by side with some of the world’s most experienced designers and practitioners has provided us with a unique insight and application of Advanced Permaculture Design. In addition to our professional skills and experience in Landscape Architecture, Permaculture Design, Natural Building, Fine Arts & Holistic Management we have developed several design tools based on our on-the-ground study of pioneering projects. Access our research here: Permaculture Research Tour.



**ARANYA AGRICULTURAL
ALTERNATIVES**
www.permacultureindia.org



**GUILDA
PERMACULTURE**
www.guildapermaculture.com

TEACHING TEAM



Narsanna Koppula is a permaculture pioneer in India. His environmental-humanitarian work has been empowering rural communities for the past two and a half decades. Narsanna is a Permaculture Consultant, Designer & Teacher and a campaigner of permaculture practices all over the world. He is a post graduate from Osmania University and received his Permaculture Certificate from Permaculture International Institute, Australia. He is a student of Dr.Venkat who invited Bill Mollison and Robyn Francis to India to further permaculture.

Narsanna was on the Board of the Permaculture Association of India and served for 12 years (1986 to 1998) as Director and General Secretary of Deccan Development Society, a premier NGO working on sustainable agriculture. He is a designer and professional guide in 'efficient water use techniques in command irrigation'. He is actively engaged in implementing Tree Based Farming Systems (TBFS) and planting 100,000 fruit plants and 3 lakh mixed forest species on 1000 tribal families' lands under Tribal Development Program. He is a project evaluator for various natural resource management projects and networks with several national and international organizations.

Narsanna is committed to ecological and sustainable agricultural livelihoods through permaculture farming practices to create a greener planet. He believes the forest is the future and he spreads his message through his non-profit organization "Aranya Agricultural Alternatives" presently operating in the rural and tribal areas of Telangana and Andhra Pradesh, India. Narsanna also leads a three month internship through the Permaculture Patashala where students implement projects in rural areas for poor farmers.

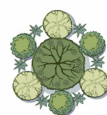


Sara Wuerstle has over a decade of experience working in Permaculture and over 50 designs implemented. She has developed a highly integrated understanding of regenerative land development at any scale. She has worked internationally for the greater part of her career, building and fine-tuning the ability to think, create and act in a truly holistic and innovative manner. As Lead Designer for a California Bay Area based design and Installation firm, she was able to not only design but direct implementation to ensure accuracy, monitoring and long-term success. Her innovative designs have disproved conventional approaches and act as models for the validity and value of Permaculture.

To gain this design acuity, she spent many years studying and working internationally with the leading practitioners in the field as well as farmers and growers while teaching and supporting more than 2 dozen PDC courses and trainings worldwide. As a consultant and designer, she has collaborated on numerous international development projects in Asia, Europe, Africa, and South America. She has also lived as part of numerous intentional communities and education centers throughout the world. She is most inspired when people savor the nutritious, delicious, and beautiful food that can come only from a healthy ecosystem. In all of these endeavors, her unique sense of style and aesthetic as an artist is ever-present.



**ARANYA AGRICULTURAL
ALTERNATIVES**
www.permacultureindia.org



**GUILDA
PERMACULTURE**
www.guildapermaculture.com

TEACHING TEAM



Eunice Neves is trained in Landscape Architecture at the University of Oporto, she worked in Portugal and Holland on private gardens, public spaces and urban planning. She left Holland in 2009 to volunteer in an ecological village in Nepal, an experience that changed her perception of the world and her profession, introducing her to Permaculture. Since then, she has been fully committed to gaining knowledge and experience in Permaculture Design. She has taken numerous courses with world experts, developed several design projects, organized and facilitated various trainings and events. She also believes Permaculture Design is the future of Landscape Architecture and Urban Planning and is actively working to bring these new ideas to her University. In 2015-2016, Eunice embarked on a crowdfunded independent research tour around the world to better understand Permaculture Design at its

She worked and lived with various Permaculture Pioneers, studying in depth their projects, ways of living and how it all came to be. Currently she is consolidating the resulting research materials into an interactive format so that this invaluable knowledge and wisdom of the pioneers can be easily shared with Permaculture Designers, academics, conventional designers, as well as farmers and growers so that regenerative actions can be fast tracked around the world.

BRING WITH YOU

- Sleeping bag and towels (if you stay in a tent)
- Flashlight/ Headlamp
- Notebook and good pens for taking notes
- Books (bring a few to show to others)
- Beginner's mind (being open to learn from everyone present)
- Working clothes (which can get dirty and damaged)
- Laptop if you like
- Sturdy shoes or boots for work and walks on the land
- Comfortable sun hat and good working gloves
- Snacks or personal comfort foods
- Musical instrument if you like playing music



**ARANYA AGRICULTURAL
ALTERNATIVES**
www.permacultureindia.org



**GUILDA
PERMACULTURE**
www.guildapermaculture.com

MORE INFO & REGISTRATION

COURSE FEE is ₹20000/- + 18 % GST for Indians and 25000 INR +18 % GST For International Participants towards Advanced Permaculture Design Course

REGISTRATION FEE includes accommodation & food.

ACCOMODATION will be basic shared dormitory (it may or may not be separate for female and male participants) and tenting options are available.

If you need accommodation for a longer period before or after the course, please specify your request in the comments.

LANGUAGE, the course will be conducted in English.

MORE INFO:

info@guildadesign.com

REGISTER AT:

aranyahyd@gmail.com

FB EVENT:

<https://www.facebook.com/events/489444898261137/>

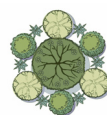
If you have any questions, contact ARANYA by email at aranyahyd@gmail.com or call at +91 79817 55785, 040 - 24142295 (Office Hours 9.30 am to 5.30 pm or leave a message on the mobile number mentioned above).

We look forward to meeting you and sharing our learning and experiences together!

SEE YOU SOON!



**ARANYA AGRICULTURAL
ALTERNATIVES**
www.permacultureindia.org



**GUILDA
PERMACULTURE**
www.guildapermaculture.com